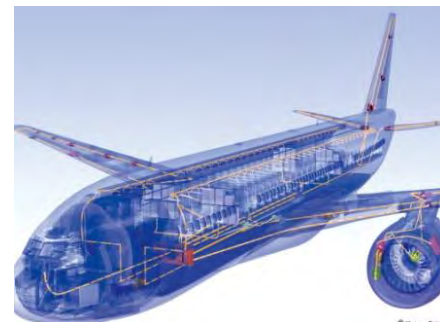
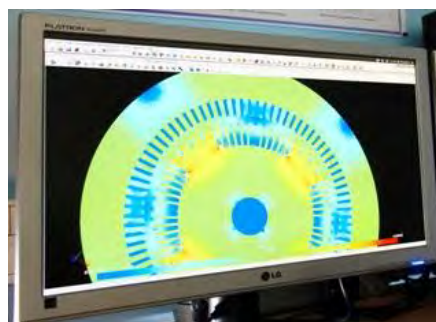




# The Cluster MEDEE

Motors and Electrical Devices for Energy Efficiency



Collaborative R&D Projects – Market Innovation – Electrical Engineering



# Cluster MEDEE

A French network gathering companies (SMEs & large groups) and laboratories around collaborative R&D projects.



# R&D axes & Target Markets

## Our target markets



Industrial processes energy efficiency



Smart Transmission System

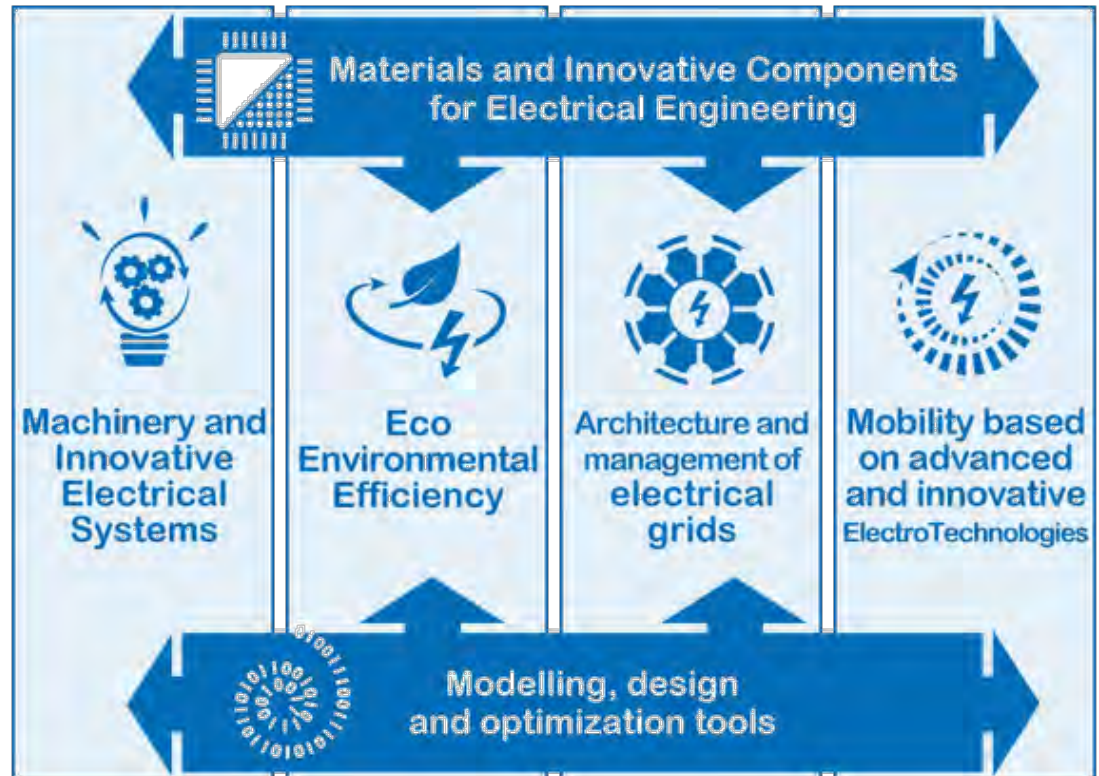


Electricity generation from renewable sources



Transportation (rail, air, marine, electrical vehicle...)

## R&D AXES





# Services

## The MEDEE Community: skills and infrastructures

### R&D Collaborative Project Expert :

- Seeking financing solutions (French and European)
- Finding R&D partners (French and European)
- Both academic and industrial **Project Monitoring Committees**

### International network :

- Brussels Representation Office
- The universities' academic collaborations
- The international offices of the companies

### Technological platforms :

- Power networks simulation
- Modelling/multi-criteria optimization
- High power bench
- Eco design and reliability
- Thermal management

### Technological watch

### Communication & Networking

## If joining a project: what assets can we bring

MEDEE: point of contact, offering access to a pool of potential high-level partners in European projects:

- Electrical engineering laboratories with specific research areas
- Innovative SMEs
- Large groups, R&D Departments (EDF, Alstom, Safran, etc.)

### **MEDEE Added Values:**

We know well our members (what type of research and project they want to join, etc.).

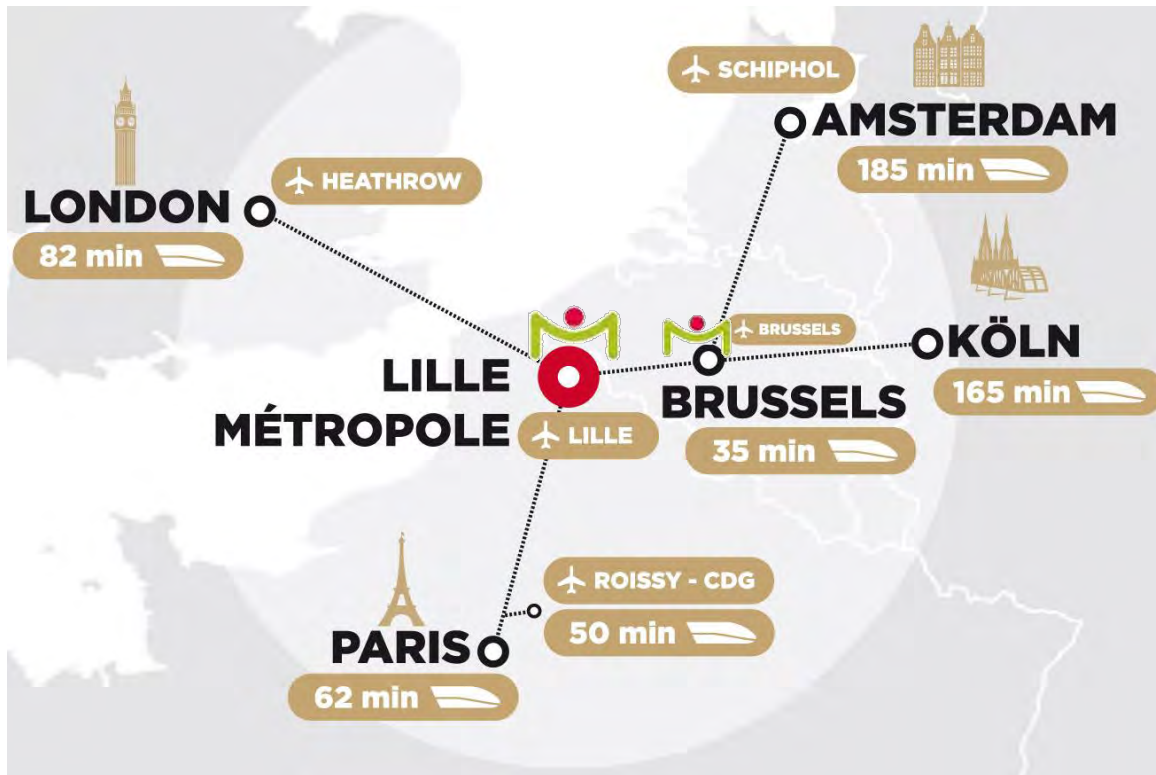
We are able to mobilize them around collaborative projects.

They are used to work together (laboratories, SMEs, large groups etc.)

Some have experience in European projects as key partners (not coordinator).

## Contact us!

MEDEE is strategically located at the heart of Europe both in the European Metropolis of **Lille** and in **Brussels**.



**Paul DUCASSE**

*MEDEE CEO*



Tél : +33 (0) 3 20 99 46 37  
[ducasse@pole-medee.com](mailto:ducasse@pole-medee.com)

**Louise VIGNAU**

*Brussels Office  
Representative*



GSM: +32 (0) 4 97 55 58 63  
[vignau@pole-medee.com](mailto:vignau@pole-medee.com)

Website: <http://www.pole-medee.com/>